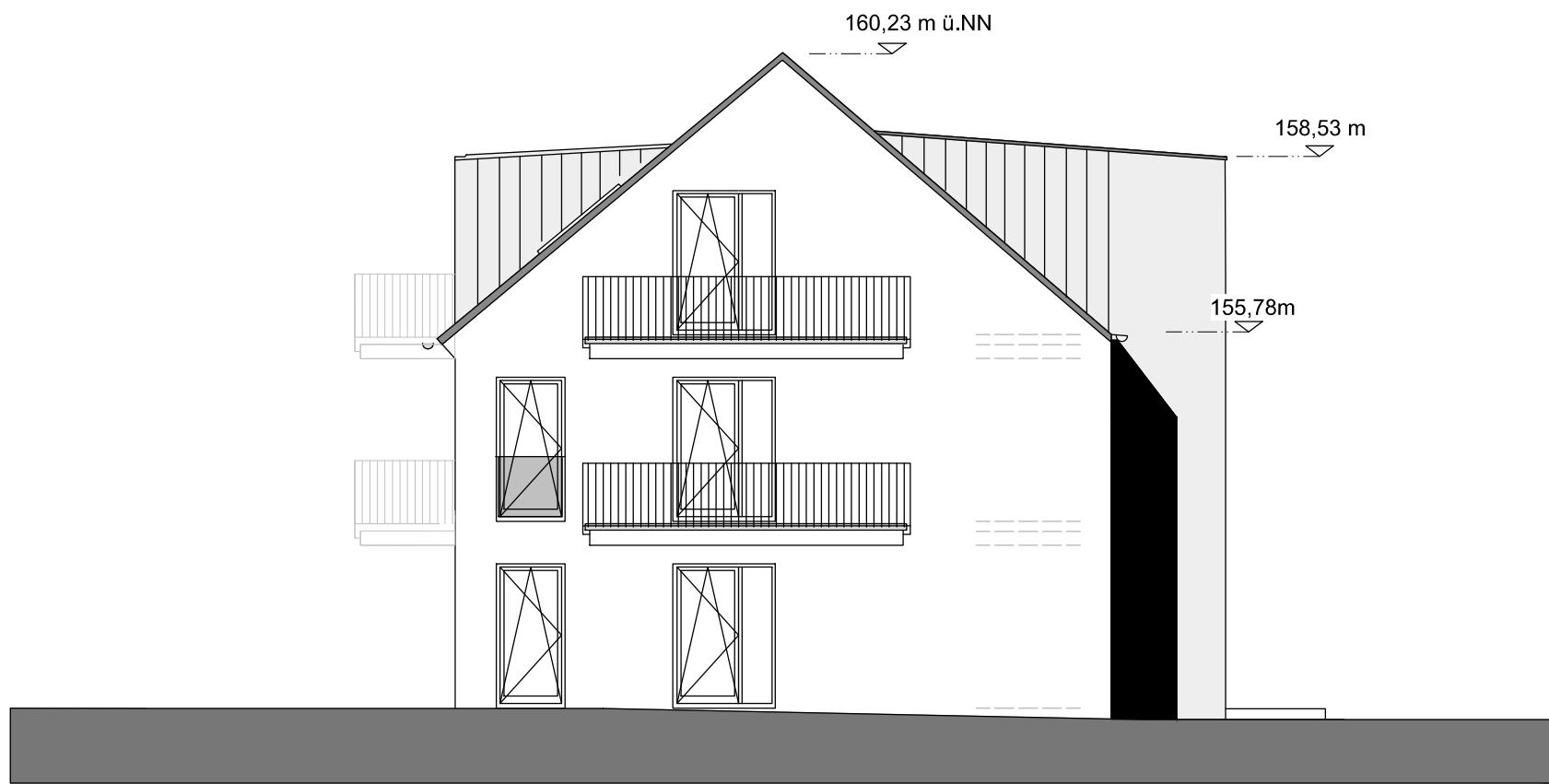
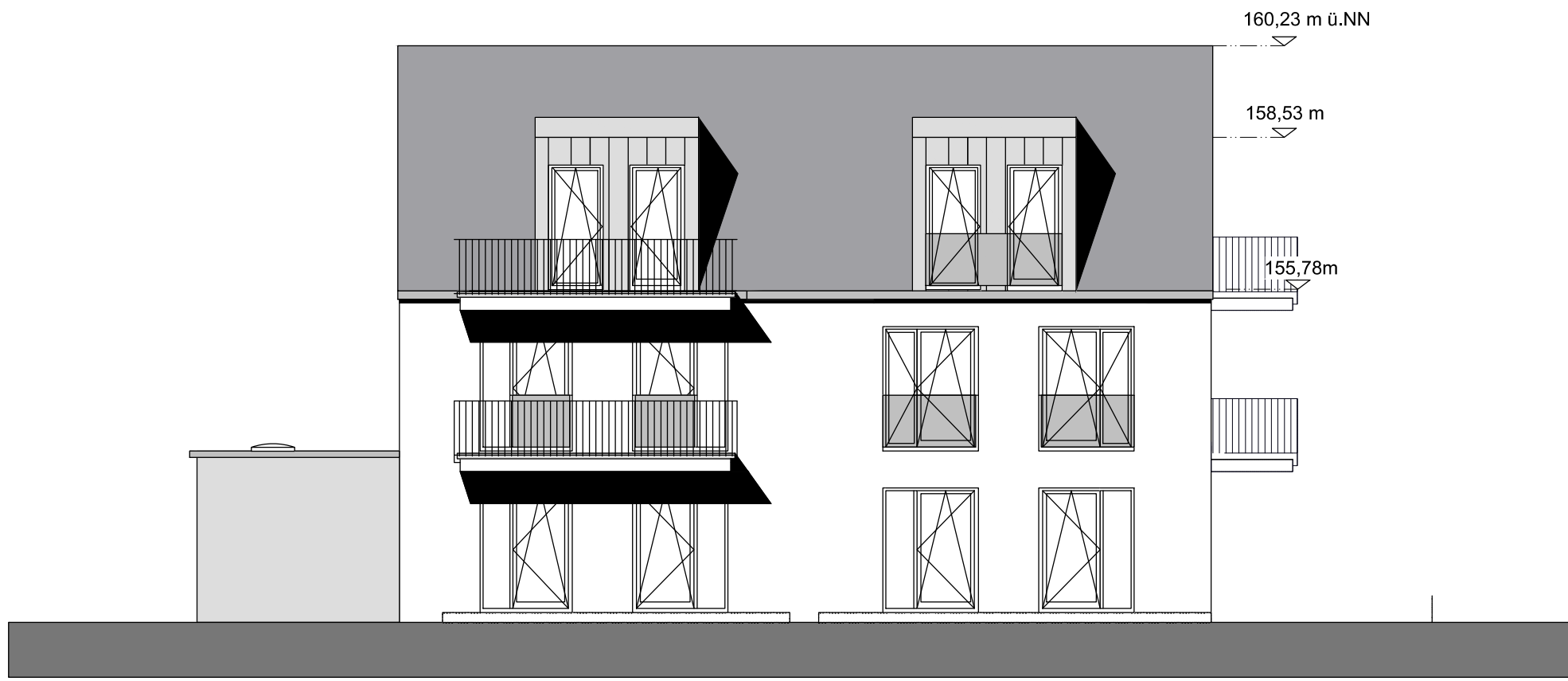


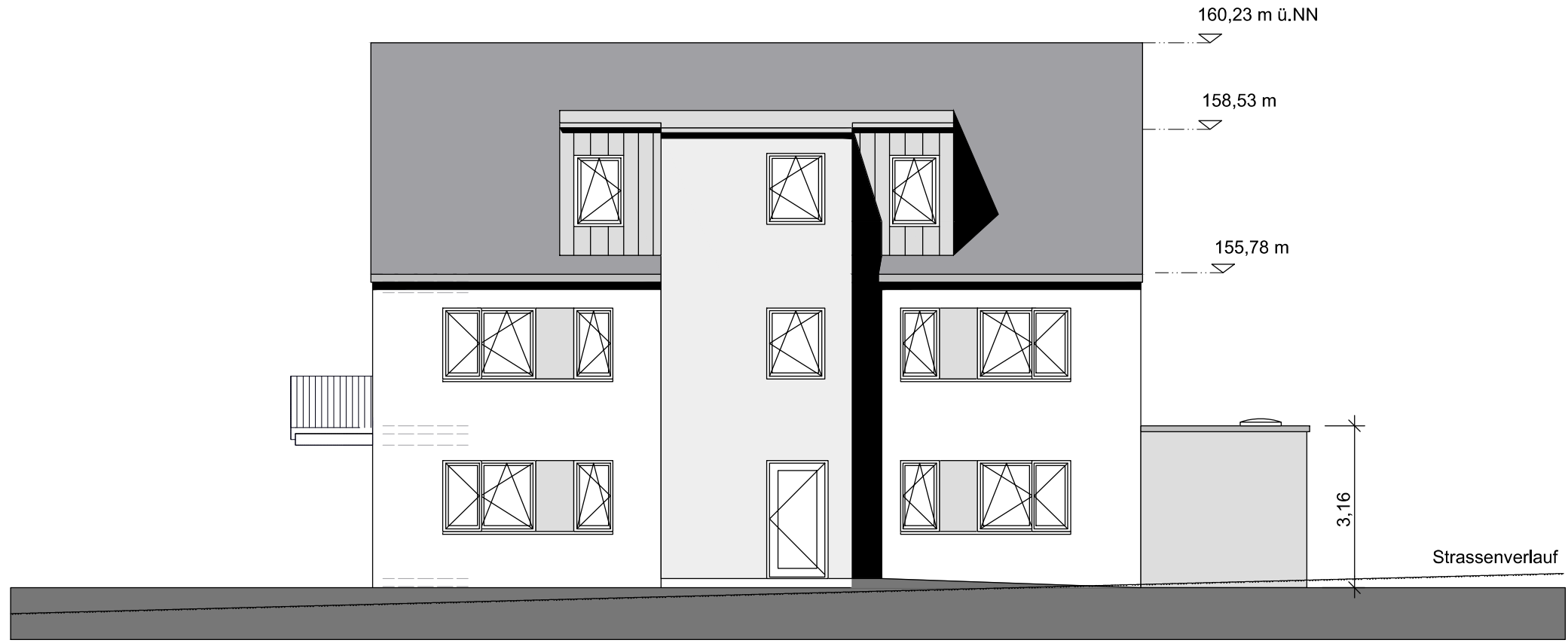
NORD - OST ANSICHT



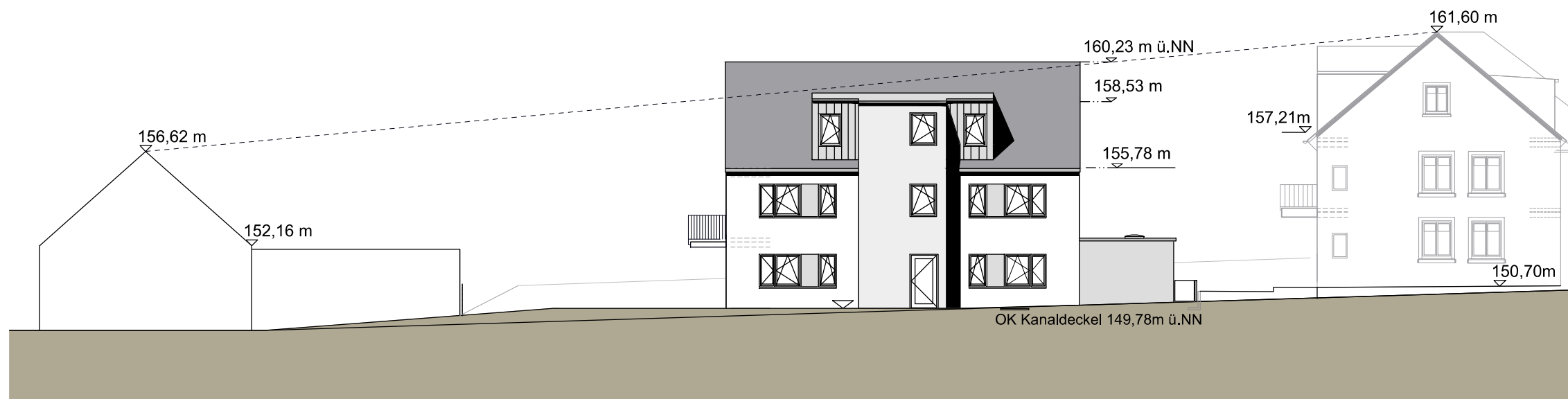
SÜD - WEST ANSICHT

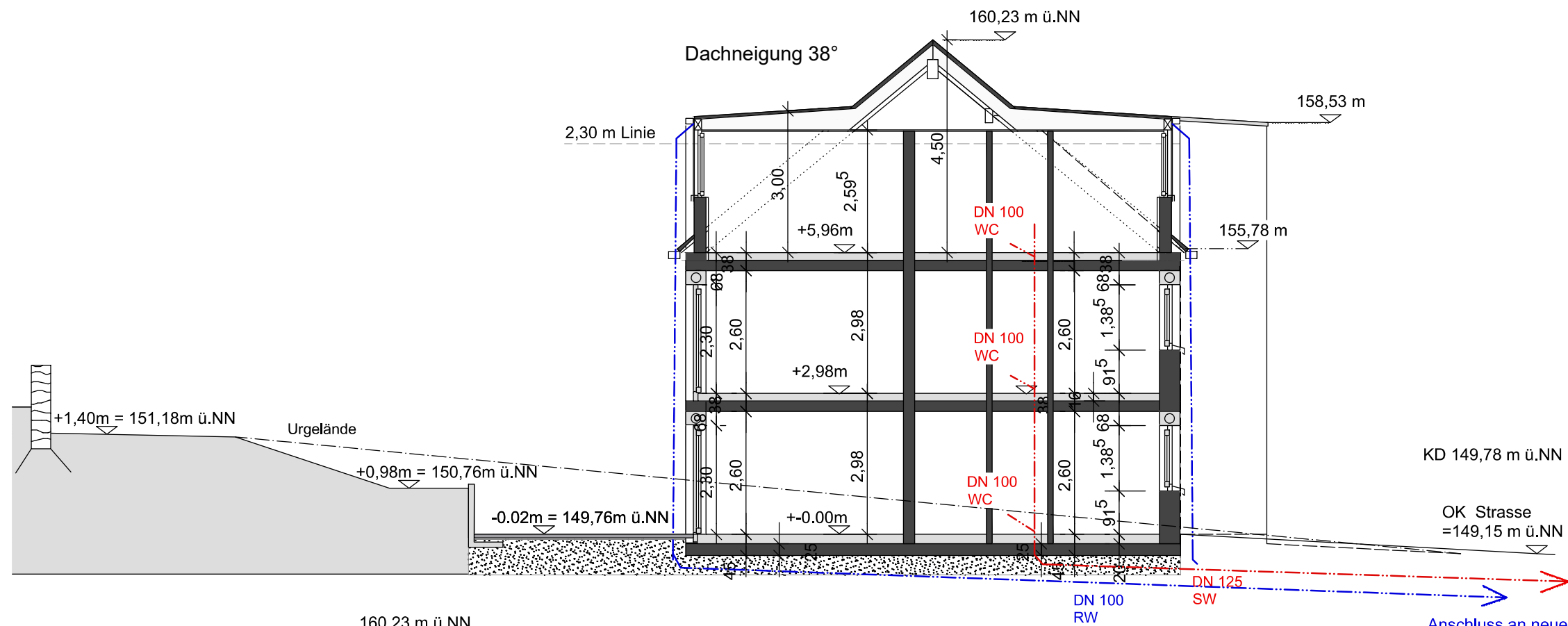


NORD - WEST GARTEN - ANSICHT



SÜD - OST STRASSEN - ANSICHT





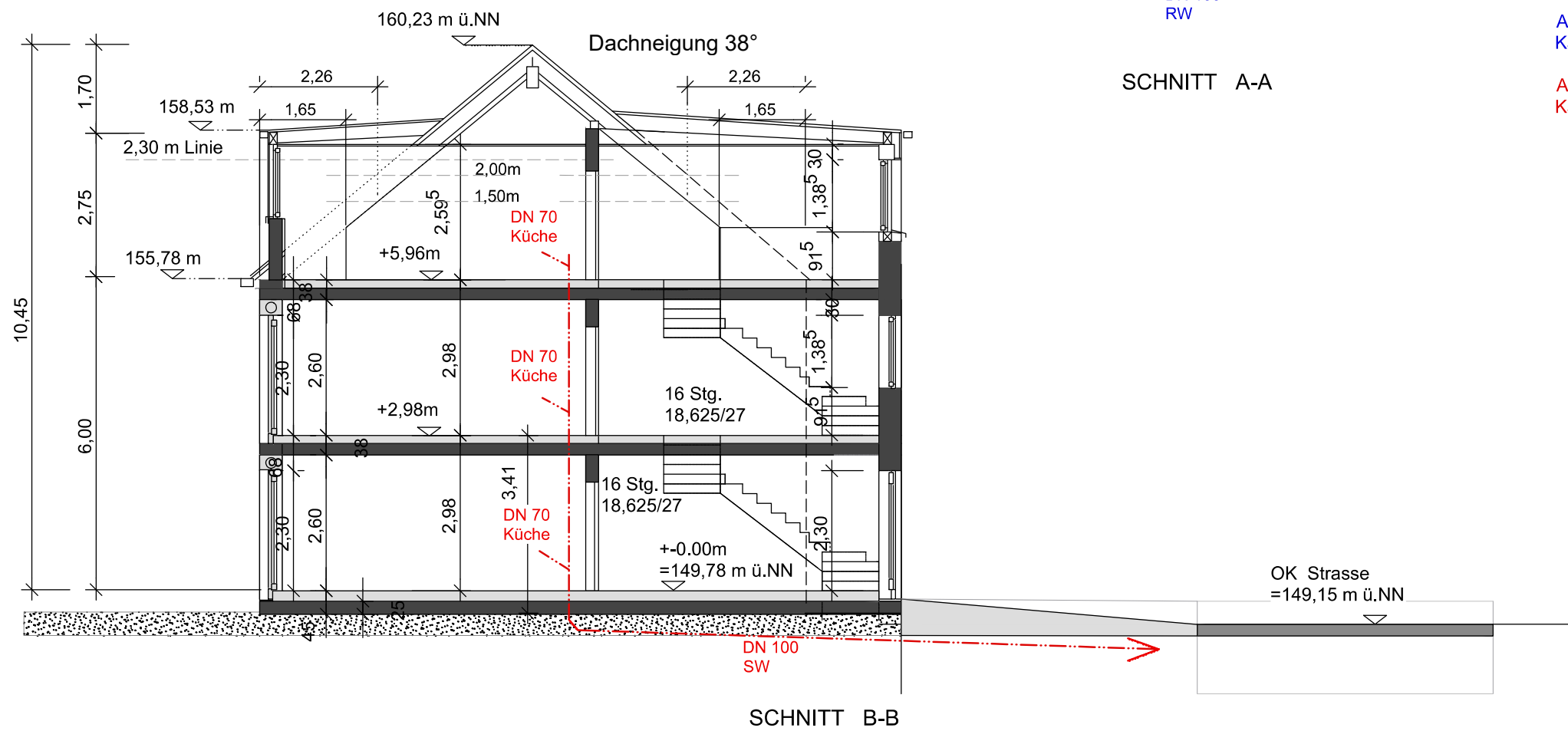
KD 149,78 m ü.NN

OK Strasse = 149,15 m ü.NN

SCHNITT A-A

Anschluss an neue Kanalleitung RW

Anschluss an neue Kanalleitungen SW



SCHNITT B-B

OK Strasse = 149,15 m ü.NN