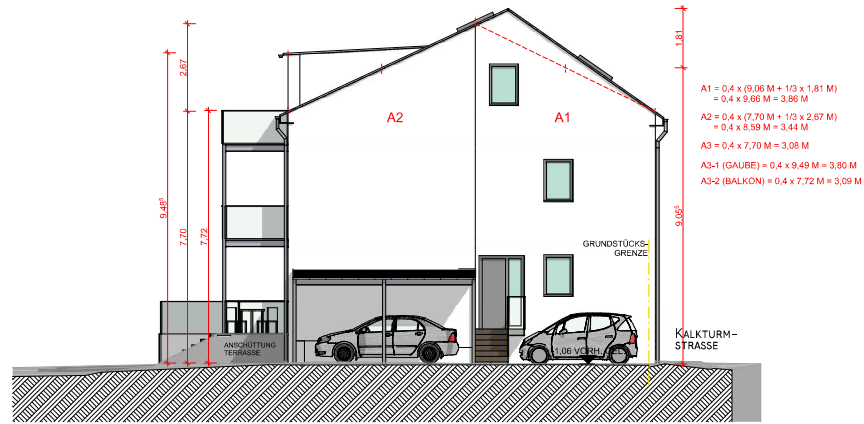


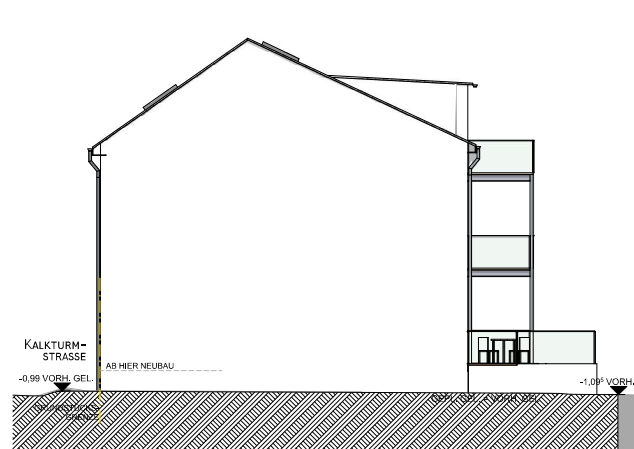
Ansicht Ost



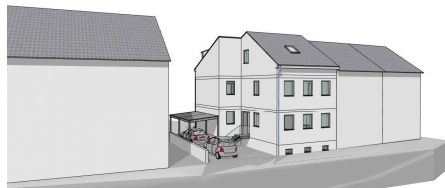
Ansicht Süd



Ansicht West



Ansicht Nord



Perspektive Ost



Perspektive Südwest



| Ansichten | | | |
|-------------------|------------|------------|---------------|
| BAUANTRAG - BA 03 | | | |
| Maßstab | Blattgröße | Datum | Planersteller |
| 1:100 | 594x420 A2 | 31.05.2022 | |