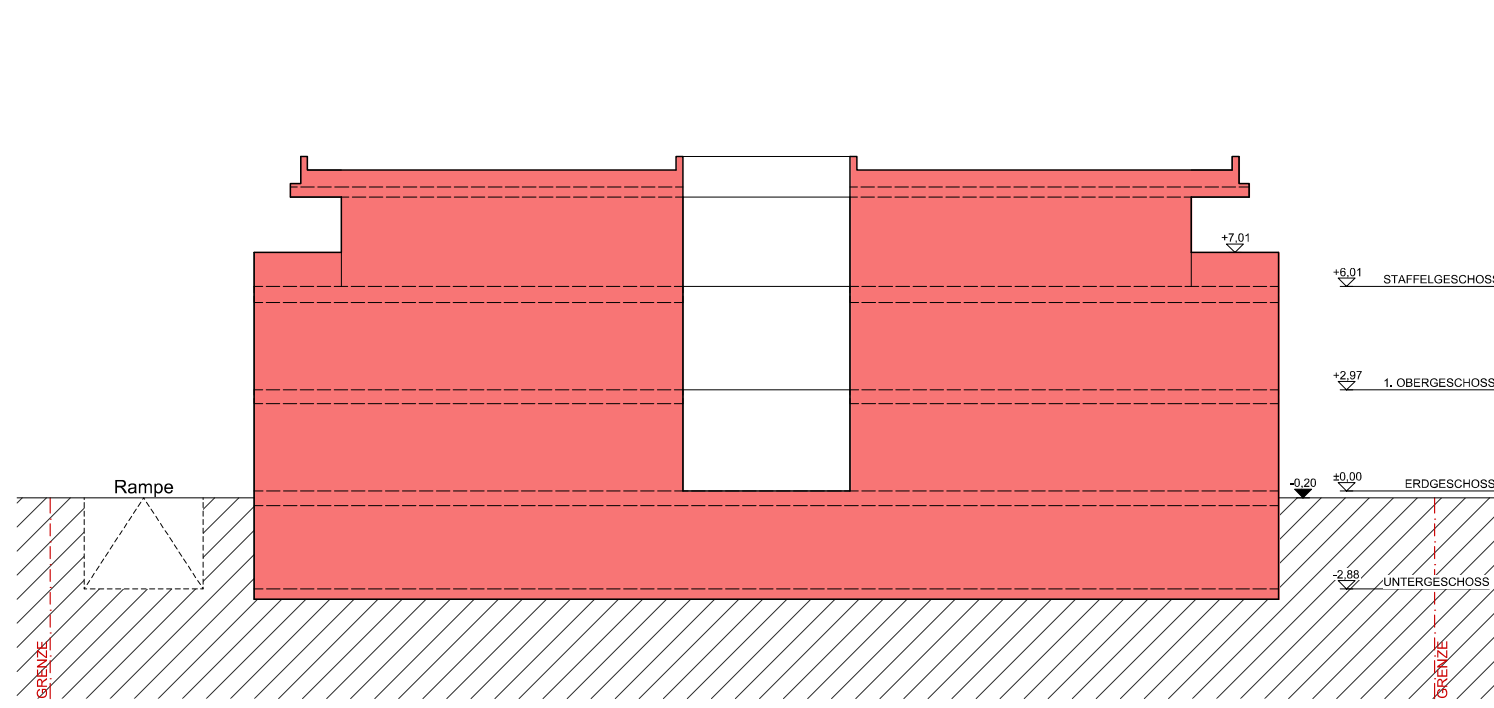




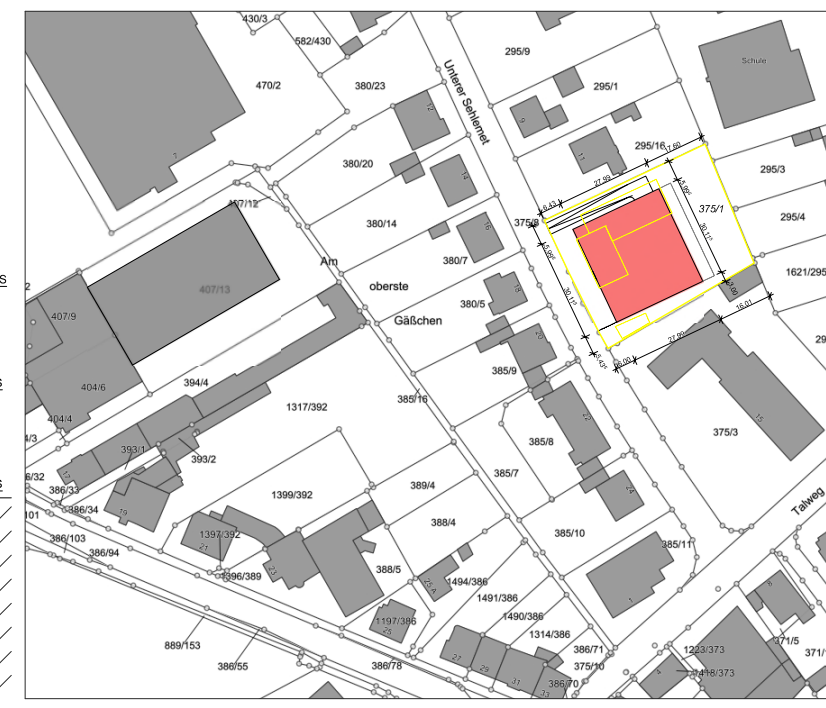
GRUNDRISS ERDGESCHOSS M. 1:200



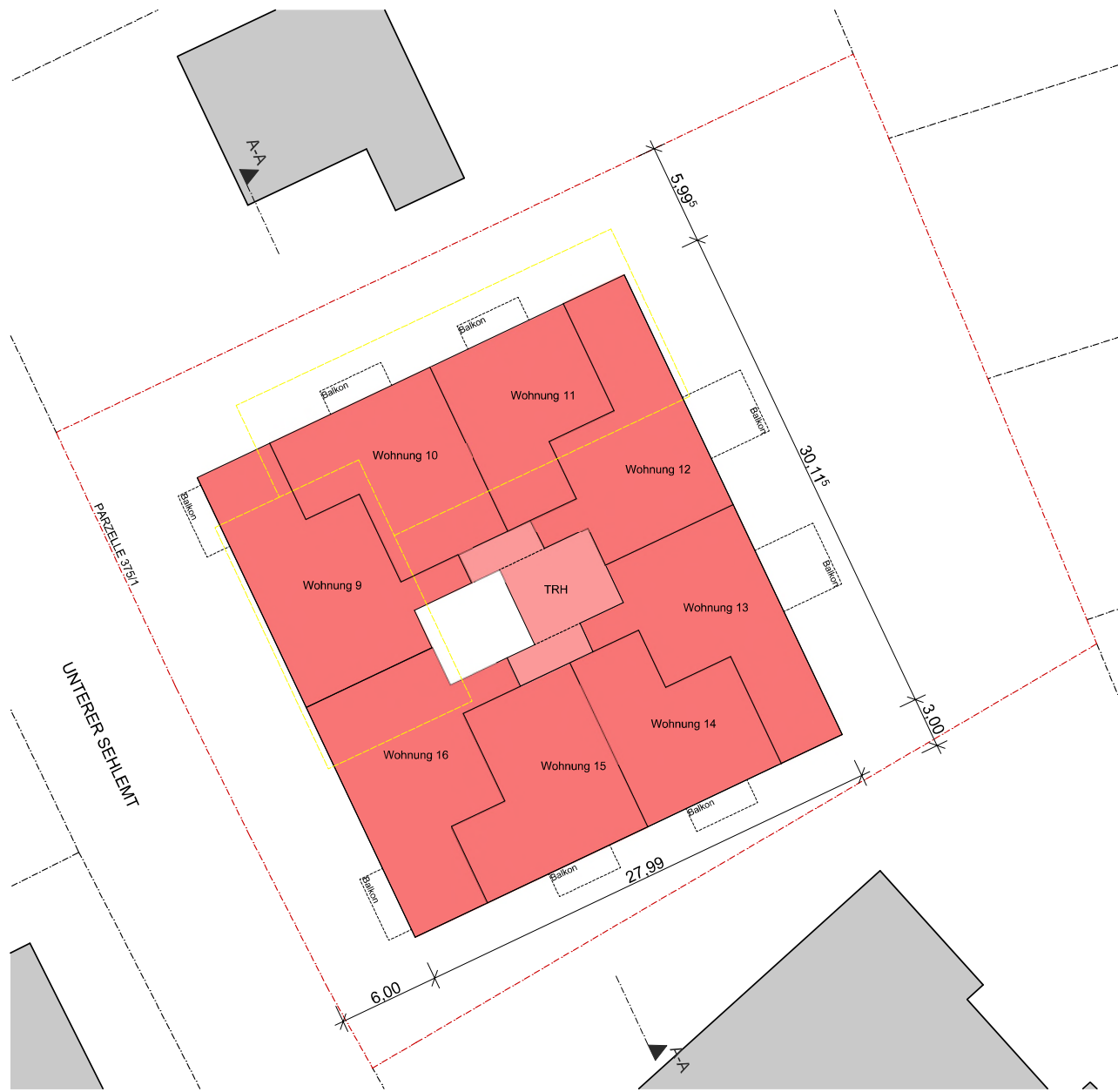
GRUNDRISS UNTERGESCHOSS M. 1:200



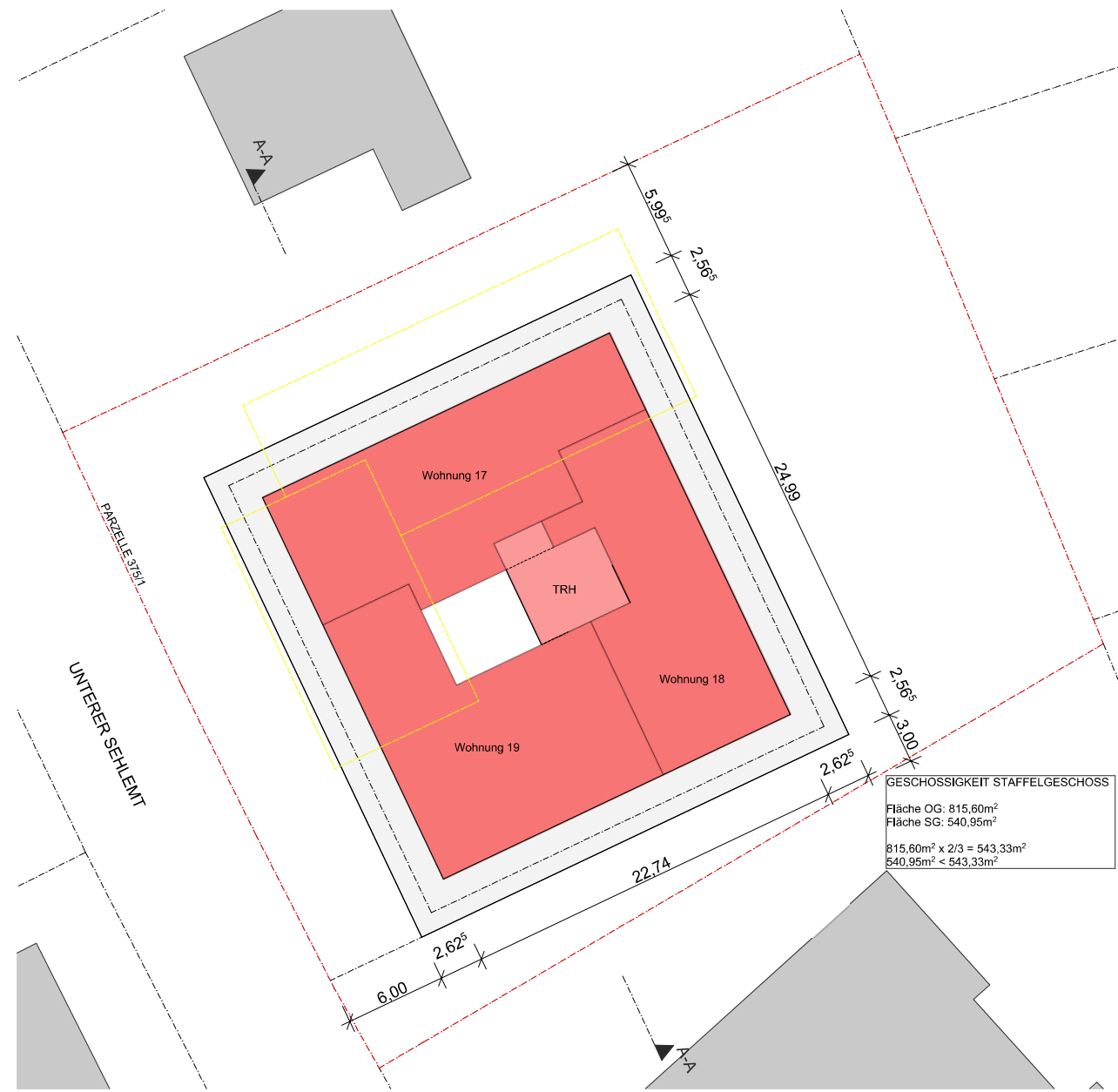
SCHNITT M. 1:100



SCHNITT M. 1:1000



GRUNDRISS 1. OBEREGESCHOSS M. 1-200



GRUNDRISS STAFFELGESCHOSS M. 1-200

GESCHOSSIGKEIT STAFFELGESCHOSS  
 Fläche OG: 815,60m<sup>2</sup>  
 Fläche SG: 540,95m<sup>2</sup>  
 $815,60m^2 \times 2/3 = 543,33m^2$   
 $540,95m^2 < 543,33m^2$